

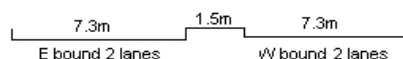
YEAR 2018

COVERAGE (B) STATION 6221

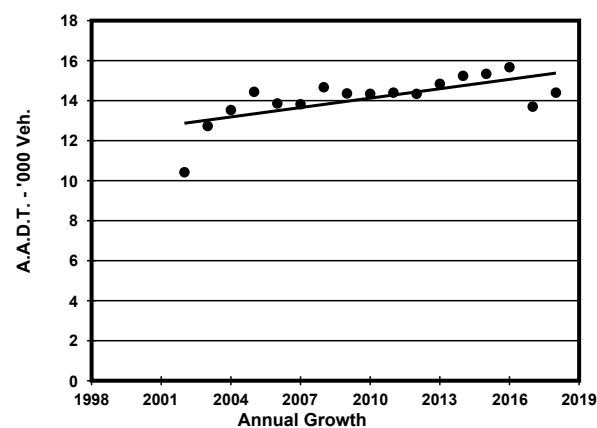
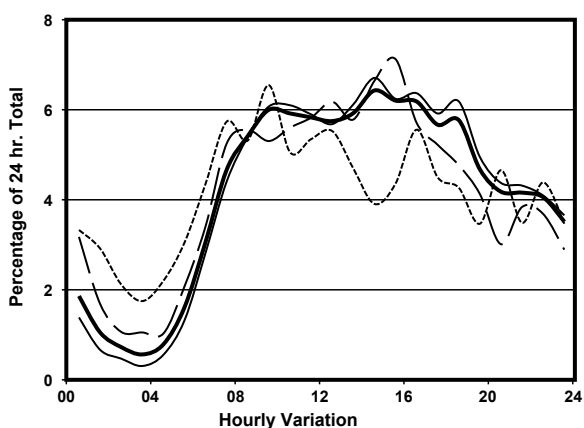
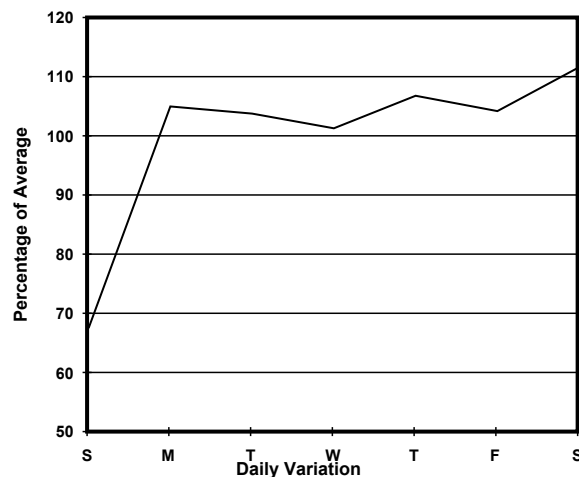
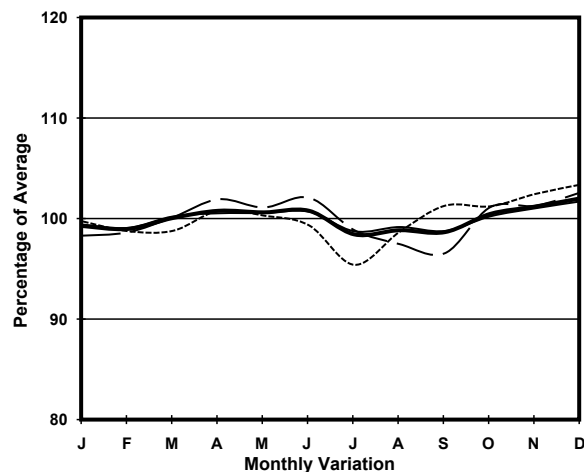
ROAD NETWORK MAJOR

ROAD TYPE DISTRICT DISTRIBUTOR

LINK TSING YI N COASTAL RD FO (from TSING TSUEN RD to TAM KON SHAN INT W END)



## 1. TRAFFIC FLOW VARIATION AND GROWTH



— All day      — Mon.- Fri.      ..... Sat.      - - - - - Sun.

## 2. TRAFFIC CHARACTERISTICS (BY DIRECTION)

Parameter	All - Day	Mon. - Fri.	Sat.	Sun.
<b>EAST BOUND</b>				
A.A.D.T.	5870	6260	6690	3820
R 12 / 24 - %	69.7	71.3	68	59.5
R 16 / 24 - %	87.2	89.6	82.8	75.2
AM Peak Hour	0900-1000	0900-1000	0800-0900	0800-0900
One-way flow at AM peak hour	310	340	310	210
T - % (AM)	-	26.9	-	-
PM Peak Hour	1600-1700	1800-1900	1600-1700	1600-1700
One-way flow at PM peak hour	390	430	420	260
T - % (PM)	-	21.4	-	-
Prop.of commercial vehicles - 16 hr.	-	26.1	-	-
<b>WEST BOUND</b>				
A.A.D.T.	8530	9000	9670	6070
R 12 / 24 - %	69.8	71	69.6	61.6
R 16 / 24 - %	86.6	88.3	84.2	77.8
AM Peak Hour	0900-1000	0900-1000	0700-0800	0900-1000
One-way flow at AM peak hour	550	590	610	440
T - % (AM)	-	20.1	-	-
PM Peak Hour	1600-1700	1600-1700	1600-1700	1600-1700
One-way flow at PM peak hour	500	550	510	290
T - % (PM)	-	21.6	-	-
Prop.of commercial vehicles - 16 hr.	-	25.2	-	-

## 3. OTHER INFORMATION AND COMMENT

**4. Vehicle classification and occupancy - Monday to Friday**

Time		Class of vehicle									
		Motor Cycle	Private Car	Taxi	Private LB	PLB	Goods veh.		Non Fr. Bus	Fr. Bus	
							Light	M & H		SD	DD
0700-0800	Pro	4.3	39.7	16.6	2.1	0.0	10.2	18.4	6.0	0.0	2.7
	Ocp	1.0	1.3	2.2	5.0	0.0	1.5	1.1	24.8	0.0	47.6
0800-0900	Pro	2.5	37.5	12.9	0.0	0.0	16.7	13.3	13.7	0.0	3.4
	Ocp	1.0	1.5	2.5	0.0	0.0	1.9	1.3	22.2	0.0	44.5
0900-1000	Pro	2.7	37.7	11.9	1.1	0.0	23.7	16.2	3.2	0.0	3.5
	Ocp	1.0	1.4	2.4	1.5	0.0	1.5	1.3	15.0	0.0	22.9
1000-1100	Pro	1.0	28.5	10.0	0.5	0.0	30.0	23.0	3.5	0.0	3.4
	Ocp	1.0	1.5	2.0	10.0	0.0	1.5	1.3	14.7	0.0	22.9
1100-1200	Pro	1.0	33.1	14.8	0.5	0.0	32.6	12.2	2.5	0.0	3.3
	Ocp	1.0	1.4	2.1	3.0	0.0	1.6	1.3	16.8	0.0	18.6
1200-1300	Pro	2.0	28.8	11.6	1.0	0.0	26.8	23.8	3.0	0.0	2.9
	Ocp	1.0	1.4	2.0	2.0	0.0	1.4	1.3	17.3	0.0	26.7
1300-1400	Pro	1.0	32.3	14.4	0.0	0.0	25.5	19.7	3.9	0.0	3.3
	Ocp	1.0	1.4	2.0	0.0	0.0	1.6	1.4	10.0	0.0	25.3
1400-1500 Peak hour	Pro	1.3	37.2	9.9	0.9	0.0	30.3	14.7	2.6	0.0	3.1
	Ocp	1.0	1.5	2.3	1.0	0.0	1.3	1.4	14.7	0.0	23.6
1500-1600	Pro	0.9	27.0	13.7	0.9	0.0	32.1	19.2	3.2	0.0	2.9
	Ocp	1.0	1.3	2.1	2.5	0.0	1.4	1.3	13.4	0.0	23.0
1600-1700	Pro	0.9	27.9	20.9	1.7	0.0	25.3	17.4	3.1	0.0	2.8
	Ocp	1.0	1.4	1.9	1.5	0.0	1.4	1.2	11.3	0.0	29.5
1700-1800	Pro	4.7	34.4	12.7	0.9	0.0	25.9	13.2	5.5	0.0	2.8
	Ocp	1.1	1.6	2.1	1.0	0.0	1.5	1.4	15.3	0.0	41.6
1800-1900	Pro	1.3	41.0	17.4	0.4	0.0	15.3	13.5	7.4	0.0	3.7
	Ocp	1.0	1.5	2.6	1.0	0.0	1.4	1.2	22.9	0.0	43.8
1900-2000	Pro	1.9	41.2	20.8	0.0	0.0	11.2	16.5	4.8	0.0	3.5
	Ocp	1.0	1.4	1.9	0.0	0.0	1.4	1.2	17.1	0.0	25.9
2000-2100	Pro	1.1	34.1	22.9	0.6	0.0	12.3	20.1	5.0	0.0	3.8
	Ocp	1.0	1.6	2.0	1.0	0.0	1.2	1.1	11.3	0.0	23.3
2100-2200	Pro	0.6	30.4	18.9	0.0	0.0	16.4	26.2	3.7	0.0	3.8
	Ocp	1.0	1.7	1.9	0.0	0.0	1.3	1.1	15.5	0.0	23.2
2200-2300	Pro	2.0	33.4	26.9	0.0	0.0	11.8	16.4	4.6	0.0	4.9
	Ocp	1.0	1.4	1.9	0.0	0.0	1.3	1.1	22.4	0.0	20.1
16 hours	Pro	1.9	34.2	15.8	0.7	0.0	21.8	17.5	4.9	0.0	3.3
	Ocp	1.0	1.4	2.1	2.7	0.0	1.5	1.2	18.1	0.0	29.2

**Legend**

**Pro.** Proportion of vehicles in % (Sum may not add up to 100% due to figure rounding)\*

**Ocp.** Average occupancy of vehicles including both driver and passengers\*

**M&H** Medium and Heavy

**\*** All traffic data are collected from combined bounds except for one way traffic